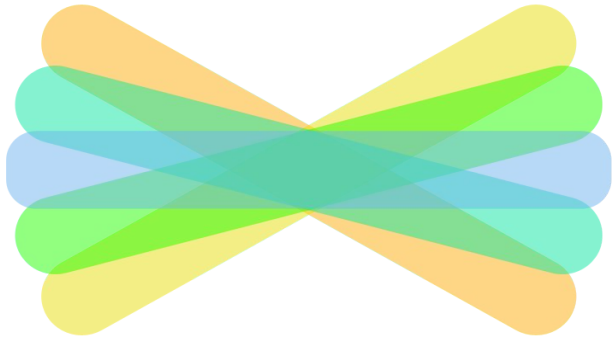




The Learning Journal

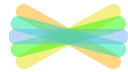
Pleased to meet you!

Kia ora!





What we will talk about



What is Seesaw?



2021 Posts



How to connect?



Questions

What IS it?



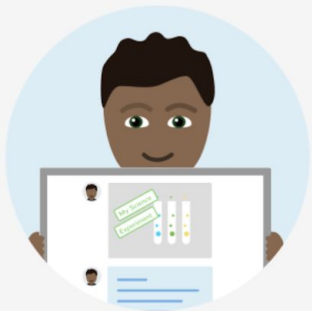


Seesaw is a digital journal!

Seesaw is a place for recording all of the learning in school. It works from school or from home! It is also a great way to share learning with students, teachers, and family.



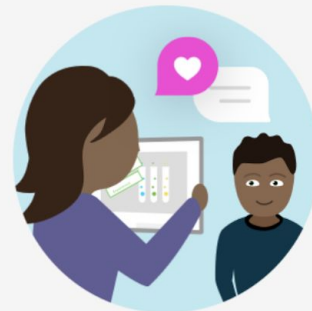
How does Seesaw work?



Students use intuitive tools to capture and demonstrate learning in a portfolio



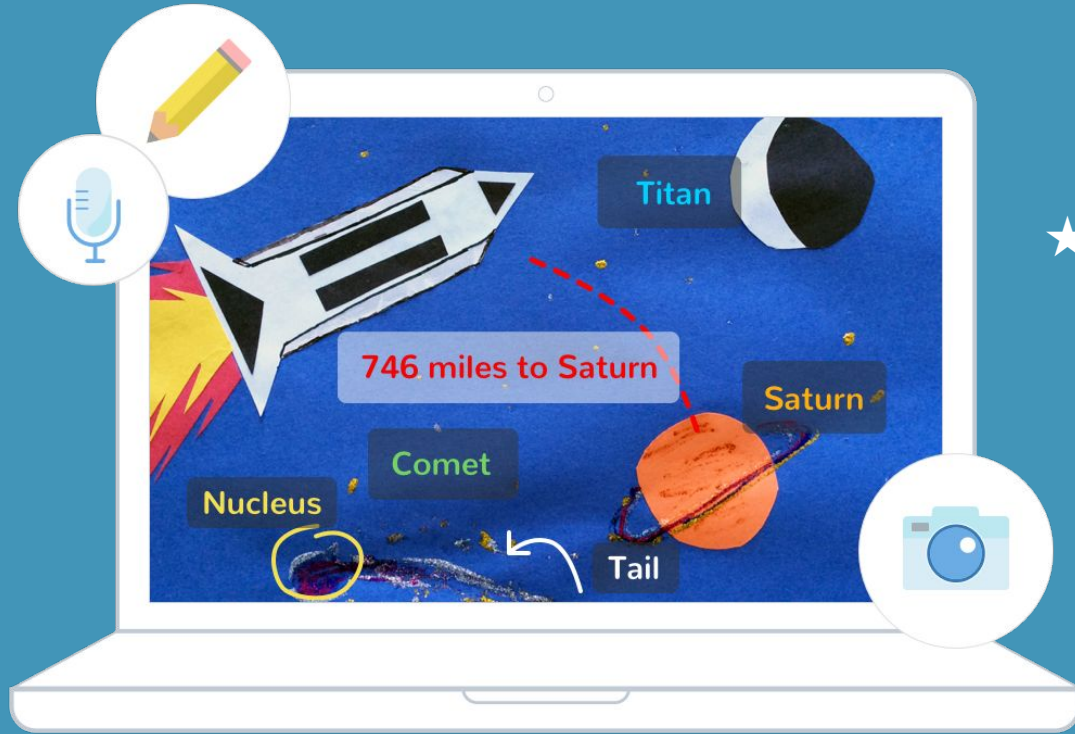
Teachers get valuable insights into what students understand without extra work



Families see their child's work and leave comments and encouragement



Unlock creative thinking for all students in any subject.



- ★ Students explore a variety of powerful tools to show what they know in the way that works best for them



Seesaw Posts 2021



Seesaw

Wow! Work



Wow! This is my best work!

Wow! I figured something out!

Wow! I did something for the first time!

Wow! I need to teach you this!



Student examples

10/3/21 The Big Scary Haunted Forest
 creak, I hear the twigs snap as I
 slowly try to find my way out of the forest.
 Zombies...
 boom I fall off my comfy bed. I get up to
 see a zombie staring into my soul. I freeze
 fright...
 Well done Alex your opening scene is well written and grab your audience attention.

These are
my opening
sentences I
am proud of
them
because I
think i used
lots of
descriptive
words



9:24 AM Tue 2 Mar

Everyone

Question number

Mark this question

Answer

Tick

Good number

Good number

1

What is the place value of the 6 in 23,876?

Thousands

2

What is the total value of the 8 in 23,876?

8 tens (80)

24

3

Order these numbers from smallest to largest: 4,451, 425, 4,054, 4,634

4,012, 425, 4,451, 4,634

5

Order these numbers from smallest to largest: 10,248, 4,026, 4,634, 4,026, 4,026

4,026, 4,026, 4,026, 4,634, 10,248

24

6

10,248 - 4,026 = 6,222

6,222

8

Order these numbers from smallest to largest: 10,248, 4,026, 4,634, 4,026, 4,026

4,026, 4,026, 4,026, 4,634, 10,248

24

7

23,876 - 4,026 = 19,850

19,850

9

Order these numbers from smallest to largest: 10,248, 4,026, 4,634, 4,026, 4,026

4,026, 4,026, 4,026, 4,634, 10,248

24

8

23,876 - 4,026 = 19,850

19,850

10

Order these numbers from smallest to largest: 10,248, 4,026, 4,634, 4,026, 4,026

4,026, 4,026, 4,026, 4,634, 10,248

24

9

23,876 - 4,026 = 19,850

19,850

11

Order these numbers from smallest to largest: 10,248, 4,026, 4,634, 4,026, 4,026

4,026, 4,026, 4,026, 4,634, 10,248

24

10

23,876 - 4,026 = 19,850

19,850

12

Order these numbers from smallest to largest: 10,248, 4,026, 4,634, 4,026, 4,026

4,026, 4,026, 4,026, 4,634, 10,248

24

11

23,876 - 4,026 = 19,850

19,850

13

Order these numbers from smallest to largest: 10,248, 4,026, 4,634, 4,026, 4,026

4,026, 4,026, 4,026, 4,634, 10,248

24

12

23,876 - 4,026 = 19,850

19,850

14

Order these numbers from smallest to largest: 10,248, 4,026, 4,634, 4,026, 4,026

4,026, 4,026, 4,026, 4,634, 10,248

24

13

23,876 - 4,026 = 19,850

19,850

15

Order these numbers from smallest to largest: 10,248, 4,026, 4,634, 4,026, 4,026

4,026, 4,026, 4,026, 4,634, 10,248

24

14

23,876 - 4,026 = 19,850

19,850

16

Order these numbers from smallest to largest: 10,248, 4,026, 4,634, 4,026, 4,026

4,026, 4,026, 4,026, 4,634, 10,248

24

15

23,876 - 4,026 = 19,850

19,850

17

Order these numbers from smallest to largest: 10,248, 4,026, 4,634, 4,026, 4,026

4,026, 4,026, 4,026, 4,634, 10,248

24

16

23,876 - 4,026 = 19,850

19,850

18

Order these numbers from smallest to largest: 10,248, 4,026, 4,634, 4,026, 4,026

4,026, 4,026, 4,026, 4,634, 10,248

24

17

23,876 - 4,026 = 19,850

19,850

19

Order these numbers from smallest to largest: 10,248, 4,026, 4,634, 4,026, 4,026

4,026, 4,026, 4,026, 4,634, 10,248

24

18

23,876 - 4,026 = 19,850

19,850

20

Order these numbers from smallest to largest: 10,248, 4,026, 4,634, 4,026, 4,026

4,026, 4,026, 4,026, 4,634, 10,248

24

19

23,876 - 4,026 = 19,850

19,850

21

Order these numbers from smallest to largest: 10,248, 4,026, 4,634, 4,026, 4,026

4,026, 4,026, 4,026, 4,634, 10,248

24

20

23,876 - 4,026 = 19,850

19,850

22

Order these numbers from smallest to largest: 10,248, 4,026, 4,634, 4,026, 4,026

4,026, 4,026, 4,026, 4,634, 10,248

24

21

23,876 - 4,026 = 19,850

19,850

23

Order these numbers from smallest to largest: 10,248, 4,026, 4,634, 4,026, 4,026

4,026, 4,026, 4,026, 4,634, 10,248

24

22

23,876 - 4,026 = 19,850

19,850

24

Order these numbers from smallest to largest: 10,248, 4,026, 4,634, 4,026, 4,026

4,026, 4,026, 4,026, 4,634, 10,248

24

23

23,876 - 4,026 = 19,850

19,850

25

Order these numbers from smallest to largest: 10,248, 4,026, 4,634, 4,026, 4,026

4,026, 4,026, 4,026, 4,634, 10,248

24

24

23,876 - 4,026 = 19,850

19,850

26

Order these numbers from smallest to largest: 10,248, 4,026, 4,634, 4,026, 4,026

4,026, 4,026, 4,026, 4,634, 10,248

24

25

23,876 - 4,026 = 19,850

19,850

27

Order these numbers from smallest to largest: 10,248, 4,026, 4,634, 4,026, 4,026

4,026, 4,026, 4,026, 4,634, 10,248

24

26

23,876 - 4,026 = 19,850

19,850

28

Order these numbers from smallest to largest: 10,248, 4,026, 4,634, 4,026, 4,026

4,026, 4,026, 4,026, 4,634, 10,248

24

27

23,876 - 4,026 = 19,850

19,850

29

Order these numbers from smallest to largest: 10,248, 4,026, 4,634, 4,026, 4,026

4,026, 4,026, 4,026, 4,634, 10,248

24

28

23,876 - 4,026 = 19,850

19,850

30

Order these numbers from smallest to largest: 10,248, 4,026, 4,634, 4,026, 4,026

4,026, 4,026, 4,026, 4,634, 10,248

24

1

What is the place value of the 6 in 23,876?

Thousands

2

What is the total value of the 8 in 23,876?

8 tens (80)

24

3

Order these numbers from smallest to largest: 4,451, 425, 4,054, 4,634

4,012, 425, 4,451, 4,634

5

Order these numbers from smallest to largest: 10,248, 4,026, 4,634, 4,026, 4,026

4,026, 4,026, 4,026, 4,634, 10,248

24

6

10,248 - 4,026 = 6,222

6,222

8

Order these numbers from smallest to largest: 10,248, 4,026, 4,634, 4,026, 4,026

4,026, 4,026, 4,026, 4,634, 10,248

24

7

23,876 - 4,026 = 19,850

19,850

9

Order these numbers from smallest to largest: 10,248, 4,026, 4,634, 4,026, 4,026

4,026, 4,026, 4,026, 4,634, 10,248

24

8

23,876 - 4,026 = 19,850

19,850

10

Order these numbers from smallest to largest: 10,248, 4,026, 4,634, 4,026, 4,026

4,026, 4,026, 4,026, 4,634, 10,248

24

9

23,876 - 4,026 = 19,850

19,850

11

Order these numbers from smallest to largest: 10,248, 4,026, 4,634, 4,026, 4,026

4,026, 4,026, 4,026, 4,634, 10,248

24

10

23,876 - 4,026 = 19,850

19,850

12

Order these numbers from smallest to largest: 10,248, 4,026, 4,634, 4,026, 4,026

4,026, 4,026, 4,026, 4,634, 10,248

24

11

23,876 - 4,026 = 19,850

19,850

13

Order these numbers from smallest to largest: 10,248, 4,026, 4,634, 4,026, 4,026

4,026, 4,026, 4,026, 4,634, 10,248

24

12

23,876 - 4,026 = 19,850

19,850

14

Order these numbers from smallest to largest: 10,248, 4,026, 4,634, 4,026, 4,026

4,026, 4,026, 4,026, 4,634, 10,248

24

13

23,876 - 4,026 = 19,850

19,850

15

Order these numbers from smallest to largest: 10,248, 4,026, 4,634, 4,026, 4,026

4,026, 4,026, 4,026, 4,634, 10,248

24

14

23,876 - 4,026 = 19,850

19,850

16

Order these numbers from smallest to largest: 10,248, 4,026, 4,634, 4,026, 4,026

4,026, 4,026, 4,026, 4,634, 10,248

24

15

23,876 - 4,026 = 19,850

19,850

17

Order these numbers from smallest to largest: 10,248, 4,026, 4,634, 4,026, 4,026

4,026, 4,026, 4,026, 4,634, 10,248

24

16

23,876 - 4,026 = 19,850

19,850

18

Order these numbers from smallest to largest: 10,248, 4,026, 4,634, 4,026, 4,026

4,026, 4,026, 4,026, 4,634, 10,248

24

17

23,876 - 4,026 = 19,850

19,850

19

Order these numbers from smallest to largest: 10,248, 4,026, 4,634, 4,026, 4,026

4,026, 4,026, 4,026, 4,634, 10,248

24

18

23,876 - 4,026 = 19,850

19,850

20

Order these numbers from smallest to largest: 10,248, 4,026, 4,634, 4,026, 4,026

4,026, 4,026, 4,026, 4,634, 10,248

24

19

23,876 - 4,026 = 19,850

19,850

21

Order these numbers from smallest to largest: 10,248, 4,026, 4,634, 4,026, 4,026

4,026, 4,026, 4,026, 4,634, 10,248

24

20

23,876 - 4,026 = 19,850

19,850

22

Order these numbers from smallest to largest: 10,248, 4,026, 4,634, 4,026, 4,026

4,026, 4,026, 4,026, 4,634, 10,248

24

21

23,876 - 4,026 = 19,850

19,850

23

Order these numbers from smallest to largest: 10,248, 4,026, 4,634, 4,026, 4,026

4,026, 4,026, 4,026, 4,634, 10,248

24

22

23,876 - 4,026 = 19,850

19,850

24

Order these numbers from smallest to largest: 10,248, 4,026, 4,634, 4,026, 4,026

4,026, 4,026, 4,026, 4,634, 10,248

24

23

23,876 - 4,026 = 19,850

19,850

25

Order these numbers from smallest to largest: 10,248, 4,026, 4,634, 4,026, 4,026

4,026, 4,026, 4,026, 4,634, 10,248

24

24

23,876 - 4,026 = 19,850

19,850

26

Order these numbers from smallest to largest: 10,248, 4,026, 4,634, 4,026, 4,026

4,026, 4,026, 4,026, 4,634, 10,248

24

25

23,876 - 4,026 = 19,850

19,850

27

Order these numbers from smallest to largest: 10,248, 4,026, 4,634, 4,026, 4,026

4,026, 4,026, 4,026, 4,634, 10,248

24

26

23,876 - 4,026 = 19,850

19,850

28

Order these numbers from smallest to largest: 10,248, 4,026, 4,634, 4,026, 4,026

4,026, 4,026, 4,026, 4,634, 10,248

24

27

23,876 - 4,026 = 19,850

19,850

29

Order these numbers from smallest to largest: 10,248, 4,026, 4,634, 4,026, 4,026

4,026, 4,026, 4,026, 4,634, 10,248

24

28

23,876 - 4,026 = 19,850

19,850

30

Order these numbers from smallest to largest: 10,248, 4,026, 4,634, 4,026, 4,026

4,026, 4,026, 4,026, 4,634, 10,248

24

1

What is the place value of the 6 in 23,876?

Thousands

2

What is the total value of the 8 in 23,876?

8 tens (80)

24

3

Order these numbers from smallest to largest: 4,451, 425, 4,054, 4,634

4,012, 425, 4,451, 4,634

5

Order these numbers from smallest to largest: 10,248, 4,026, 4,634, 4,026, 4,026

4,026, 4,026, 4,026, 4,634, 10,248

24

6

10,248 - 4,026 = 6,222

6,222

8

Order these numbers from smallest to largest: 10,248, 4,026, 4,634, 4,026, 4,026

4,026, 4,026, 4,026, 4,634, 10,248

24

7

23,876 - 4,026 = 19,850

19,850

9

Order these numbers from smallest to largest: 10,248, 4,026, 4,634, 4,026, 4,026

4,026, 4,026, 4,026, 4,634, 10,248

24

8

23,876 - 4,026 = 19,850

19,850

10

Order these numbers from smallest to largest: 10,248, 4,026, 4,634, 4,026, 4,026

4,026, 4,026, 4,026, 4,634, 10,248

24

9

23,876 - 4,026 = 19,850

19,850

11

Order these numbers from smallest to largest: 10,248, 4,026, 4,634, 4,026, 4,026

4,026, 4,026, 4,026, 4,634, 10,248

24

10

23,876 - 4,026 = 19,850

19,850

12

Order these numbers from smallest to largest: 10,248, 4,026, 4,634, 4,026, 4,026

4,026, 4,026, 4,026, 4,634, 10,248

24

11

23,876 - 4,026 = 19,850

19,850

13

Order these numbers from smallest to largest: 10,248, 4,026, 4,634, 4,026, 4,026

4,026, 4,026, 4,026, 4,634, 10,248

24

12

23,876 - 4,026 = 19,850

19,850

14

Order these numbers from smallest to largest: 10,248, 4,026, 4,634, 4,026, 4,026

4,026, 4,026, 4,026, 4,634, 10,248

24

13

23,876 - 4,026 = 19,850

19,850

15

Order these numbers from smallest to largest: 10,248, 4,026, 4,634, 4,026, 4,026

4,026, 4,026, 4,026, 4,634, 10,248

24

14

23,876 - 4,026 = 19,850

19,850

16

Order these numbers from smallest to largest: 10,248, 4,026, 4,634, 4,026, 4,026

4,026, 4,026, 4,026, 4,634, 10,248

24

15

23,876 - 4,026 = 19,850

19,850

17

Order these numbers from smallest to largest: 10,248, 4,026, 4,634, 4,026, 4,026

4,026, 4,026, 4,026, 4,634, 10,248

24

16

23,876 - 4,026 = 19,850

19,850

18

Order these numbers from smallest to largest: 10,248, 4,026, 4,634, 4,026, 4,026

4,026, 4,026, 4,026, 4,634, 10,248

24

17

23,876 - 4,026 = 19,850

19,850

19

Order these numbers from smallest to largest: 10,248, 4,026, 4,634, 4,026, 4,026

4,026, 4,026, 4,026, 4,634, 10,248

24

18

23,876 - 4,026 = 19,850

19,850

20

Order these numbers from smallest to largest: 10,248, 4,026, 4,634, 4,026, 4,026

4,026, 4,026, 4,026, 4,634, 10,248

24

19

23,876 - 4,026 = 19,850

19,850

21

Order these numbers from smallest to largest: 10,248, 4,026, 4,634, 4,026, 4,026

4,026, 4,026, 4,026, 4,634, 10,248

24

20

23,876 - 4,026 = 19,850

19,850

22

Order these numbers from smallest to largest: 10,248, 4,026, 4,634, 4,026, 4,026

4,026, 4,026, 4,026, 4,634, 10,248

24

21

23,876 - 4,026 = 19,850

19,850

23

Order these numbers from smallest to largest: 10,248, 4,026, 4,634, 4,026, 4,026

4,026, 4,026, 4,026, 4,634, 10,248

24

22

23,876 - 4,026 = 19,850

19,850

24

Order these numbers from smallest to largest: 10,248, 4,026, 4,634, 4,026, 4,026

4,026, 4,026, 4,026, 4,634, 10,248

24

23

23,876 - 4,026 = 19,850

19,850

25

Order these numbers from smallest to largest: 10,248, 4,026, 4,634, 4,026, 4,026

4,026, 4,026, 4,026, 4,634, 10,248

24

24

23,876 - 4,026 = 19,850

19,850

26

Order these numbers from smallest to largest: 10,248, 4,026, 4,634, 4,026, 4,026

4,026, 4,026, 4,026, 4,634, 10,248

24

25

23,876 - 4,026 = 19,850

19,850

27

Order these numbers from smallest to largest: 10,248, 4,026, 4,634, 4,026, 4,026

4,026, 4,026, 4,026, 4,634, 10,248

24

26

23,876 - 4,026 = 19,850

19,850

28

Order these numbers from smallest to largest: 10,248, 4,026, 4,634, 4,026, 4,026

4,026, 4,026, 4,026, 4,634, 10,248

24

27

23,876 - 4,026 = 19,850

19,850

29

Order these numbers from smallest to largest: 10,248, 4,026, 4,634, 4,026, 4,026

4,026, 4,026, 4,026, 4,634, 10,248

24

28

23,876 - 4,026 = 19,850

19,850

30

Order these numbers from smallest to largest: 10,248, 4,026, 4,634, 4,026, 4,026

4,026, 4,026, 4,026, 4,634, 10,248

24

1

What is the place value of the 6 in 23,876?

Thousands

2

What is the total value of the 8 in 23,876?

8 tens (80)

24

3

Order these numbers from smallest to largest: 4,451, 425, 4,054, 4,634

4,012, 425, 4,451, 4,634

5

Order these numbers from smallest to largest: 10,248, 4,026, 4,634, 4,026, 4,026

4,026, 4,026, 4,026, 4,634, 10,248

24

6

10,248 - 4,026 = 6,222

6,222

8

Order these numbers from smallest to largest: 10,248, 4,026, 4,634, 4,026, 4,026

4,026, 4,026, 4,026, 4,634, 10,248

24

7

23,876 - 4,026 = 19,850

19,850

9

Order these numbers from smallest to largest: 10,248, 4,026, 4,634, 4,026, 4,026

4,026, 4,026, 4,026, 4,634, 10,248

24

8

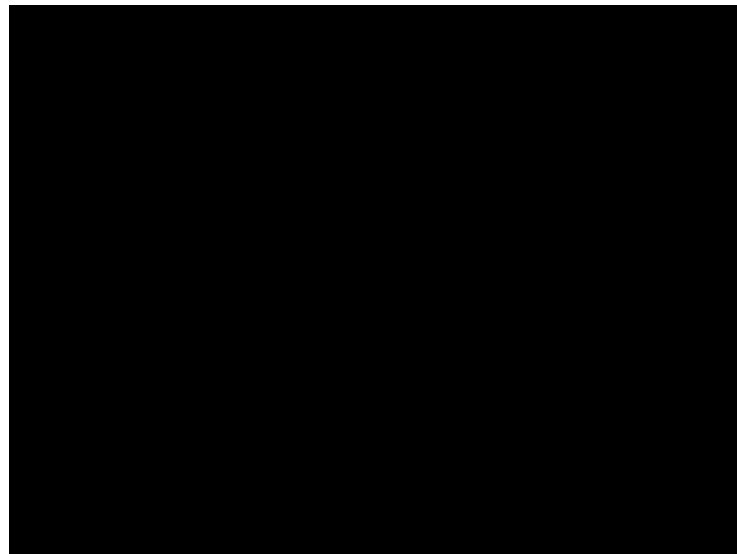
23,876 - 4,026 = 19,850

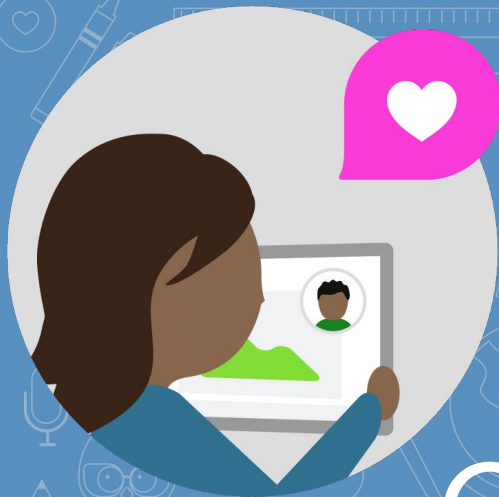
19,850

10

Order these numbers from smallest to largest: 10,248, 4,026, 4,

Student examples



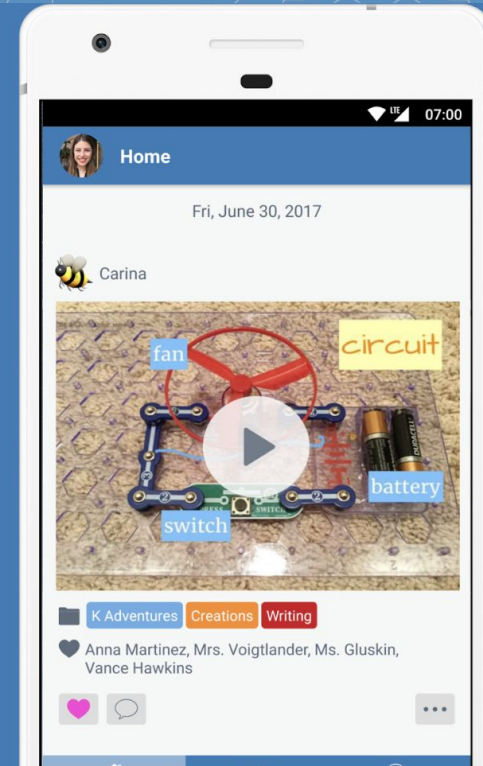
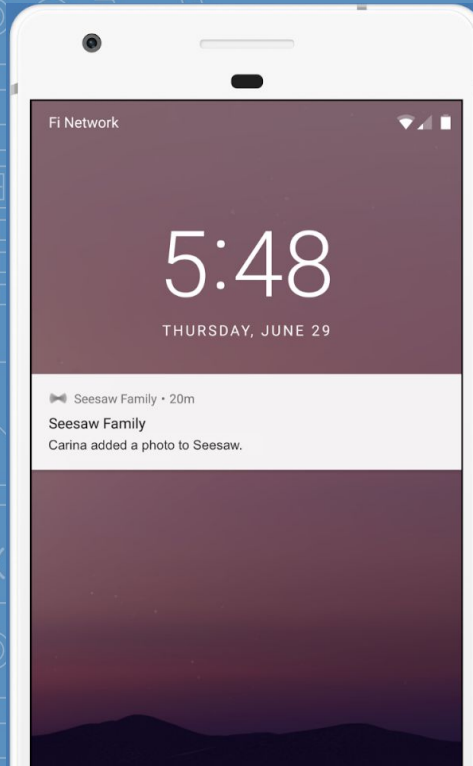


Connect Families to Seesaw



Families use the free app or visit the website app.seesaw.me

1. Student captures learning in Seesaw
2. Teacher approves
3. Notification is sent to family member via app or email
4. Family member opens the notification and goes to Seesaw Family app or website
5. Family member can like or leave an audio or text comment
6. Teacher approves comment
7. Student sees family member's feedback



My Children > Karim's Classes > Seesaw

Ka

Karim

volume = length x width x height



**the ketchup bottle has more
volume than the dinosaur!**

Jan 30, 2020



Seesaw

Conferences

MG

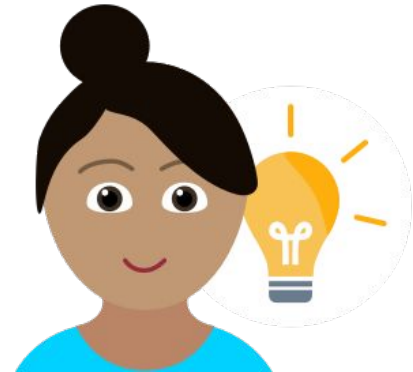
What a creative comparison, Karim! Let's do this at home this weekend :)

Post





Comment Examples

- ★ WOW! Great job! I am very impressed.
- ★ Why did this post make you go WOW?
- ★ What inspired you to make this post?
- ★ Tell me what you learned from this?
- ★ How did you figure this out?




Parents can
also select for
messages to
be translated!

CommentsEditor




Connecticut



Mrs. Voigtlander

hace 1 semana

Great work Allie! Your narration was clear and full of great facts!




Emma P

hace 1 semana

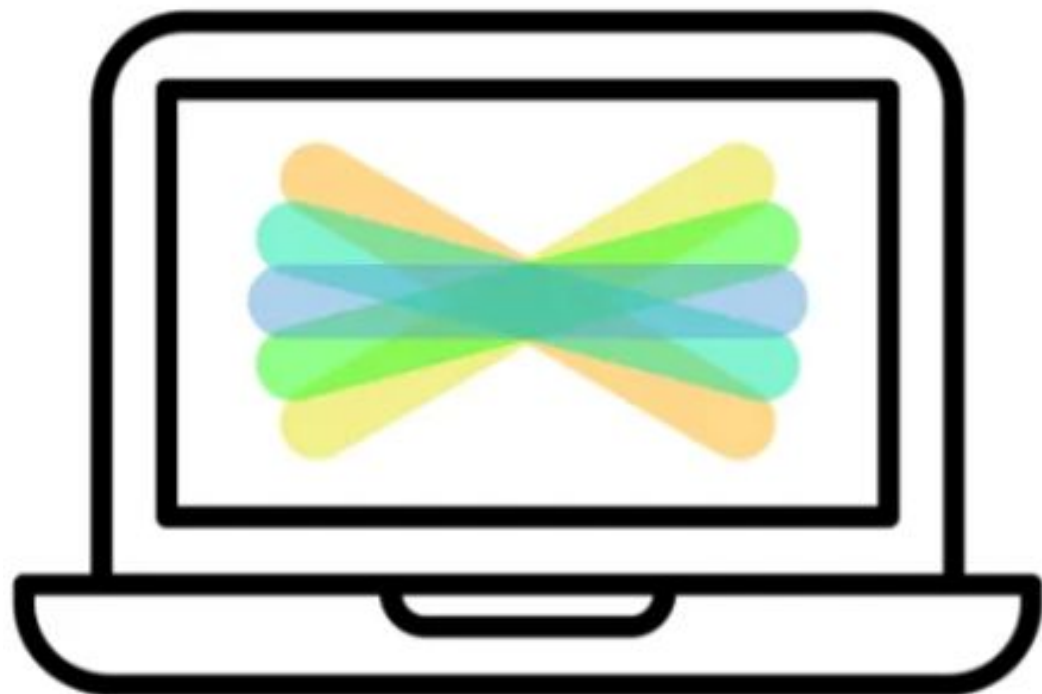
Genial! Me encantó!

SEE ORIGINAL

Write a comment...



Questions?
Let's have a GREAT year with Seesaw!





roisin@pegasusbay.school.nz